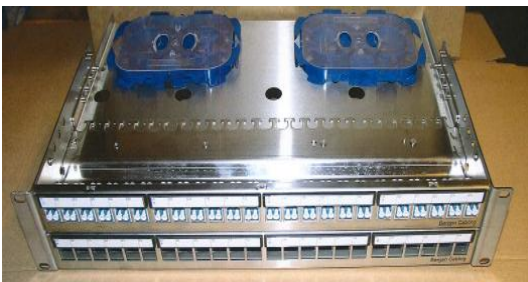


**Bergen Cabling Heavy Duty Stainless Steel  
Hybrid Patchpanel 2 HU for 24 Snap-in Cat.6A RJ45 and 24 LC adapters  
Hybrid Patchpanel 1 HU for 12 Snap-in Cat.6A RJ45 and 12 LC adapters  
For Fusion splicing and field termination of the fibre.**

**BC-13-206** 24 port 2 HU Field termination**BC-13-205** 12 port 1 HU for Field termination**BC-13-207** 24 port 2 HU For Fusion splicing**BC-13-208** 12 port 1 HU for Fusion splicing

### **Hybrid Patchpanel for up to 24 Cat.6A connectors and 24 LC duplex SM adapters**

19" Patchpanel 2 HU of solid stainless steel.

Front adjustable from flush to 7 cm rear. Version for fusion splice and for field termination.

Heavy duty solution for maritime and offshore installations with good distance from fastening the cable to the snap in connector.

Unique handling of copper and fiber in the same panel and protecting plate fibre. Comes without any pigtails or field termination connectors.

### **Dimensions 2 HU panel**

Height:	8,8 cm
Width:	44,6 cm
Depth:	20,0 cm



## Dimensions 1 HU panel

---

Height: 4,4 cm  
Width: 44,6 cm  
Depth: 20,0 cm

## Patchpanel contents

---

Prepared for grounding facilities as well as labeling solution with plastic cover.  
Shelf for handling the fiber and a protection plate cover on top for protection.

- 12/24 RJ45 Cat.6A connectors for 10 Gigabit.
- 12/24 duplex LC single mode adapters
- 2 fiber splice trays for heat shrink splicing 2x24 fibers.
- or 4 spool organizer for field termination.

## Ordering information

---

Part No.	Part Name
<b>BC-13-205</b>	BC Hybrid panel 1U, 12xCat6a, for fiber field termination
<b>BC-13-206</b>	BC Hybrid panel 2U, 24xCat6a, for fiber field termination
<b>BC-13-207</b>	BC Hybrid panel 2U, 24xCat6a, for fiber fusion splicing
<b>BC-13-208</b>	BC Hybrid panel 1U, 12xCat6a, for fiber fusion splicing

## Related products in the Hybrid Range

---

Part No.	Part Name
<b>BC-10-003</b>	DNV approved Hybrid cable Cat.7 + 2 single mode fibers SHF1
<b>BC-10-004</b>	DNV approved Hybrid cable Cat.7 + 2 single mode fibers SHF1/MUD
<b>BC-12-236</b>	Wall outlet hybrid with 1 RJ45 + 1 Duplex LC adapter
<b>BC-30-002</b>	Pack of 24 LC single mode pigtailed (blue and white)
<b>BC-30-021</b>	Pack of 12 coloured splice protectors
	Pack of 12 coloured LC SM pigtailed
	Unicam Field termination connector LC SM