

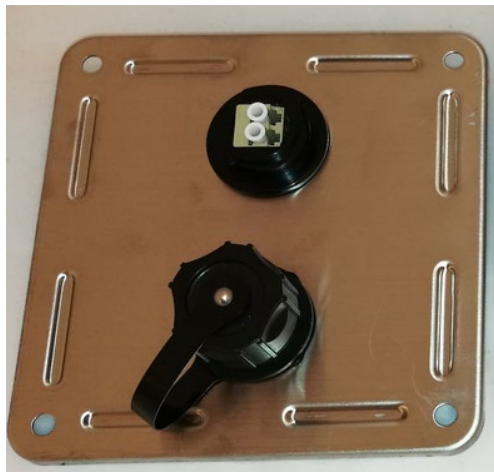
Bergen Cabling Cat6A Maritime IP67 Solution



Bergen Cabling IP67 Wall Outlet 1x Cat.6A



Bergen Cabling IP67 wall outlet 2x Cat.6A



Bergen Cabling IP 67 wall outlet with fiber (LC)



Bergen Cabling IP67 to IP67 Patchcord



Bergen Cabling IP67 to IP20 Patchcord

Application

The outlet comes with a Cat6A Screened connector for harsh environment with IP 67 impact for outdoor use. Two versions with Cat6A: One or two RJ45 outlets. Comes complete loaded and with gland and Cat6A IP67 connector. Fits together with our IP patchcords IP67 to IP67 or IP67 to IP20.

Can also use outlets with LC fiber optic connector and/or Cat6a connector.

Standards

EN 50173-1; ISO/IEC 11801 Cat.6A, IEC 60603-7-51

Construction, Mechanical and Measurement

Front in stainless steel and back box in hard polylac ABS plastic. UL 94V-0

Connector Insertion / extraction life: 750 Cycles minimum.

IDC wire Gauge: 22-24 AWG.

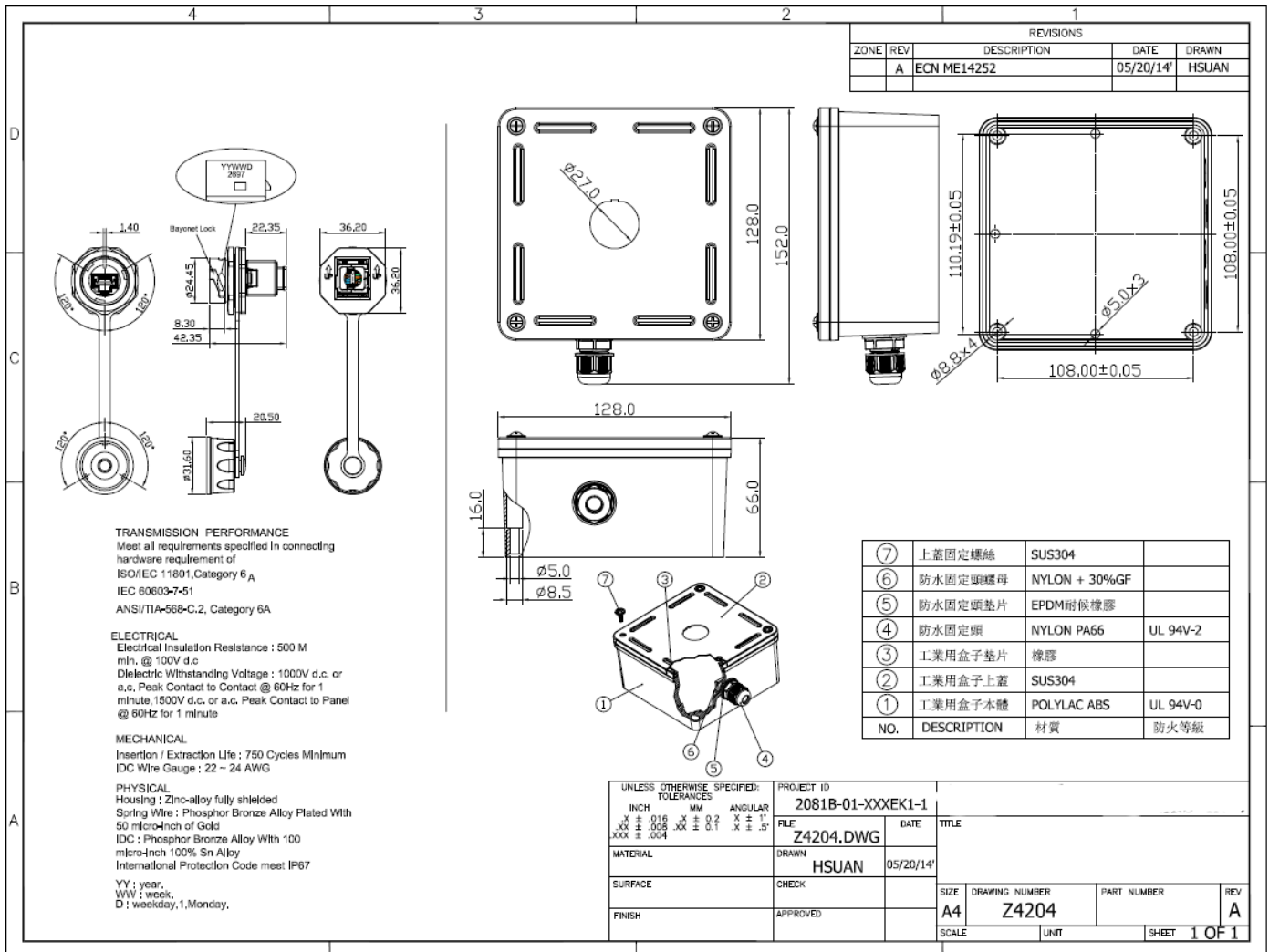
L x W x H (for the box itself): 120 x 120 x 67mm

L x W x H (with connector(s) installed): 120 x 120 x 95mm

Weight (BC-12-021): 530g

Weight (BC-12-024): 584g

Drawing



Ordering info

Part No.	EI No	Eghub ID	Part Name
BC-12-021	6904225	100001444	BC Maritime Outlet IP67 w/1x Cat6a
BC-12-024	6904226	100001476	BC Maritime Outlet IP67 w/2x Cat6a
BC-12-237			BC Maritime Outlet IP67 1xRJ45 Cat6a + 1xLC SM
BC-17-013	6904264		BC Maritime Patchcord IP67-IP67 Cat6A 3m
BC-17-015	6904265		BC Maritime Patchcord IP67-IP67 Cat6A 5m
BC-17-003	6904262		BC Maritime Patchcord IP67-IP20 Cat6A 3m
BC-17-005	6904263		BC Maritime Patchcord IP67-IP20 Cat6A 5m
BC-17-007			BC Maritime Patchcord IP67-IP20 Cat6A 10m